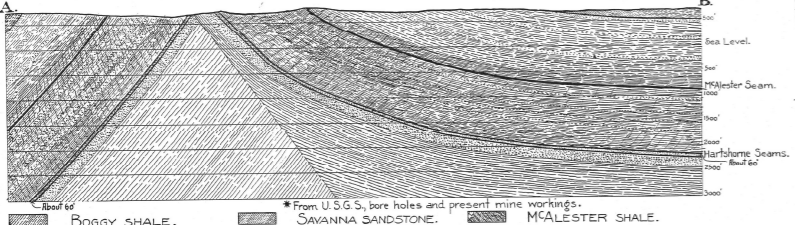


Section of Strata. A to B*



* From U.S.G.S. bore holes and present mine workings.
 BOGGY SHALE. SAVANNA SANDSTONE. MCALESTER SHALE.
 HARTSHORNE SANDSTONE. SHALE AND SANDY ROCKS.

The McALESTER-KREBS COALFIELD

† ANALYSIS OF MCALESTER SEAM.		† ANALYSIS OF LOWER HARTSHORNE SEAM.
Moisture. 1.01		Moisture. 1.36
Vol. Comb. Matter. 31.26		Vol. Comb. Matter. 32.49
Fixed Carbon. 56.44		Fixed Carbon. 53.87
Ash. 4.33		Ash. 5.29
Sulphur. 0.13		Sulphur. 2.36

Scale. 1" = 4000 Feet
 COPYRIGHT 1915.
 by George M. Brown E.M.

Segregated lands reserved for mining purposes. — Approximate location of strip-pits.